

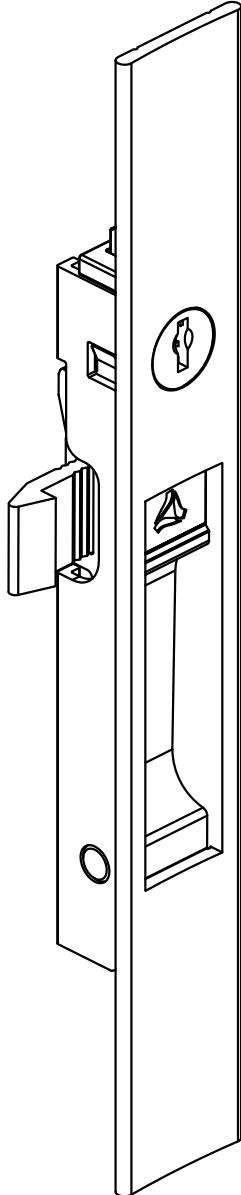


FECHO CONCHA DONÉR | 192 MM - COM CHAVE

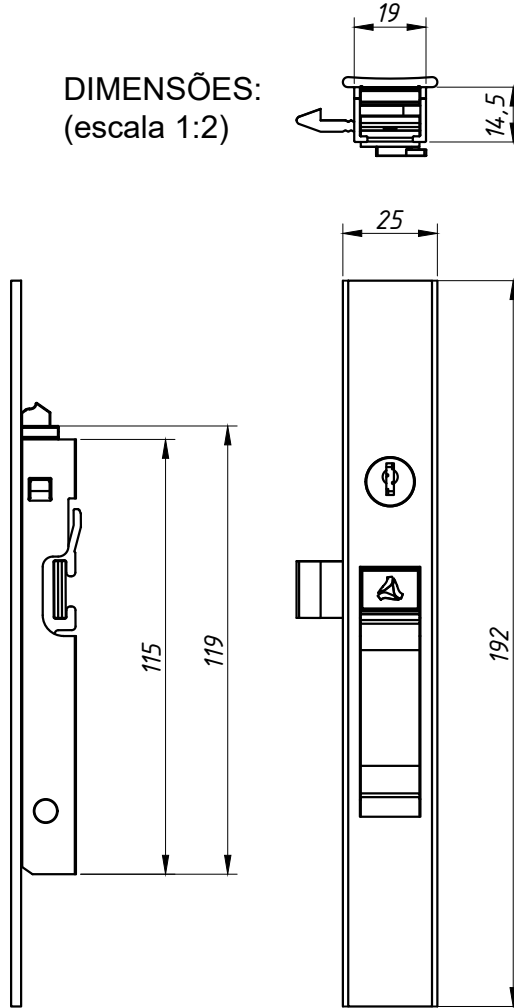
APLICAÇÃO:
ABSOLUTA®, ALUK 2.0®, ALUK 2.5®,
NOSTRA 25®, CÉLERE®, ECOLINE 2.5®,
HYDRO OFFICIAL®, IMPERIAL
2.5®, INOVA®, MEGA 20®, MEGA 25®,
SUPREMA®, SMART 2.0®, SP20®.

Setembro/2023 - REV.:01 Julho/2024

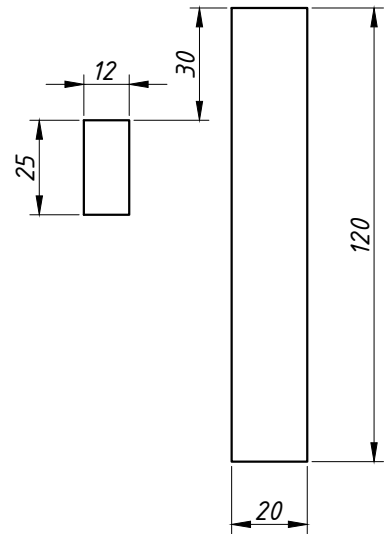
PERSPECTIVA:
(sem escala)



DIMENSÕES:
(escala 1:2)



USINAGEM:
(escala 1:2)



CARACTERÍSTICAS:

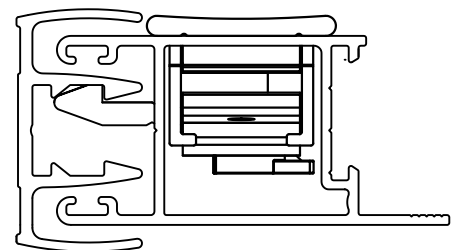
Componentes:	Matéria-prima:
Estrutura	Alumínio
Lingueta	Alumínio
Parafuso	Aço Inox
Molas	Aço mola
Eixo de centro	Alumínio

Acabamento

Preto Fosco Branco Bronze

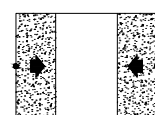
Embalagem	20 Fechos
	20 Linguetas
	20 Chaves

DETALHE DE APLICAÇÃO



(escala 1:1)

CÓDIGO	ACABAMENTO
FEC501PT	Preto
FEC501FS	Fosco
FEC501BC	Branco
FEC501BZ	Bronze



JANELAS
E PORTAS
DE CORRER

10.20